

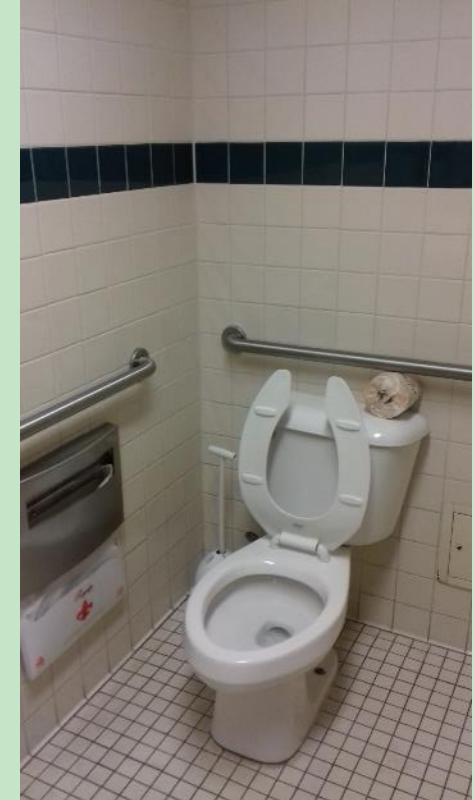


Sierra Madre Library & Cultural Center

City Council
July 11, 2017



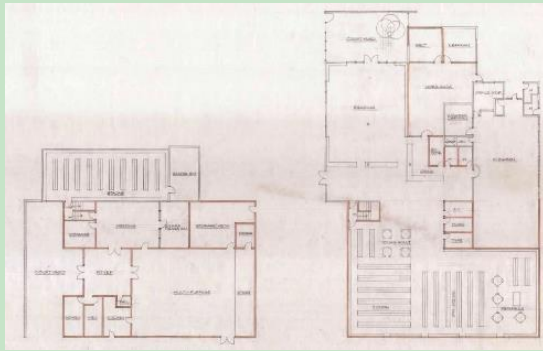




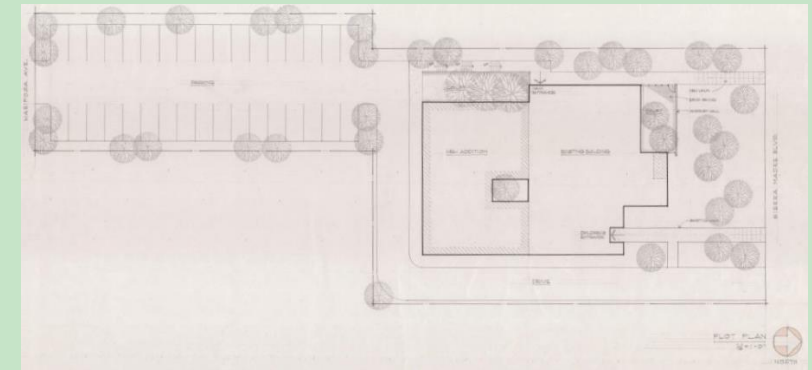
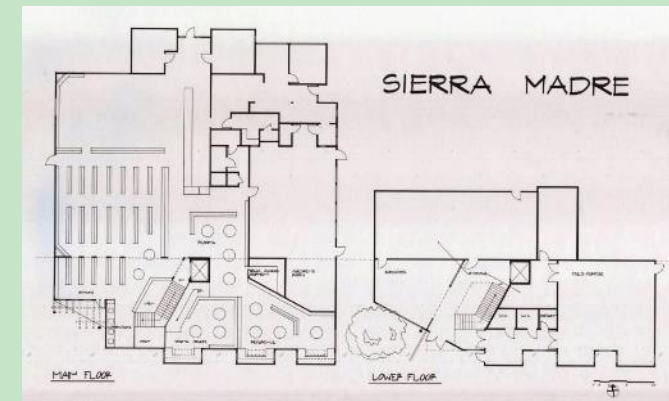
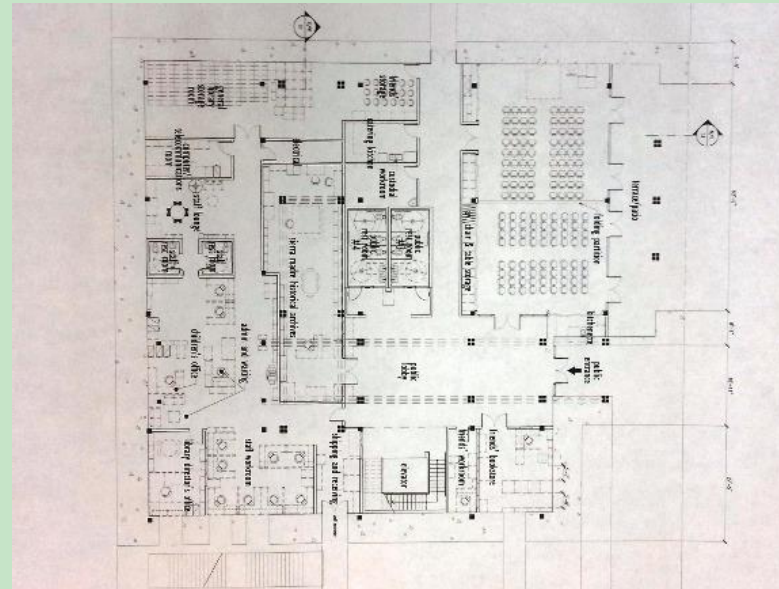
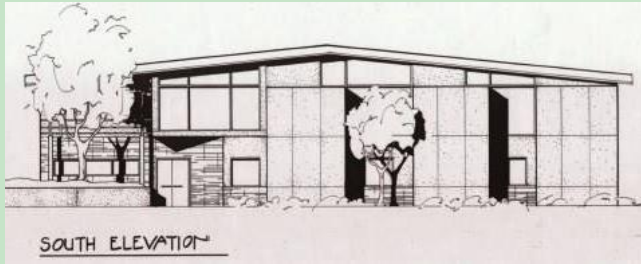


	2012-13	2013-14	2014-15	2015-16	2016-17
Total Circulation	86829	79673	85,779	94,283	97,968
Patron Visits	82940	78976	83396	80,526	81,279
Program Attendance	4918	6720	8399	8960	12699





- 1967 – Sierra Madre Library & Cultural Center project
- 1976 – Library expansion project
- 1989 – Sierra Madre Public Library Building Program
- 1994 – Library Services Construction Act
- 1996 – Library addition and remodel
- 2003-2004 – New Sierra Madre Library project



\$1.4 Million for Band-Aid fix

\$3.8 Million for a Meaningful Improvement





Heavy cuts to programs

Cuts to staffing

Shrinking of community use space

Elimination of some events



Lack of Capital Improvement Funding



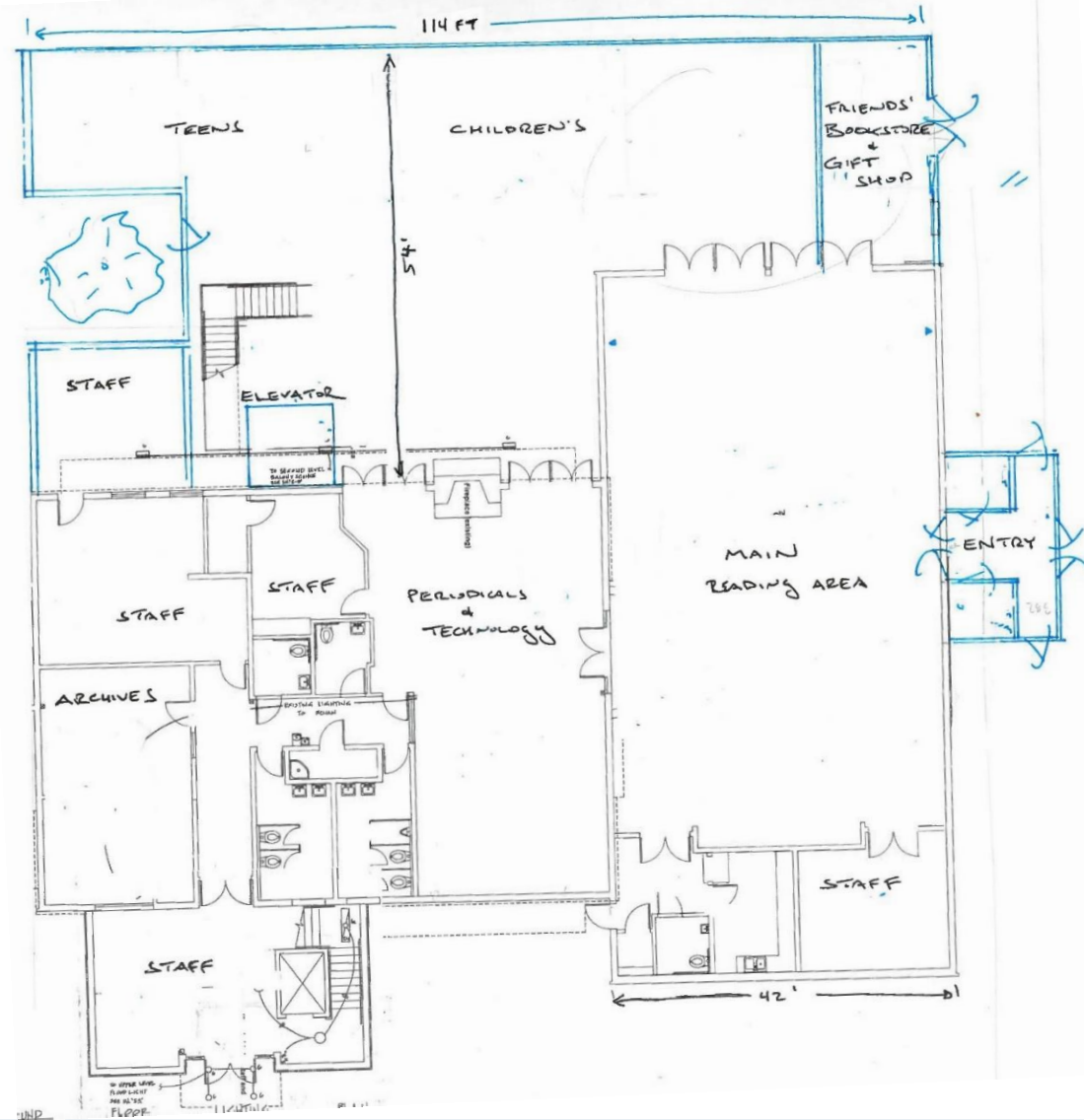


- **Increases Library and Community Services programming ability**
- **Combines strengths of two departments working together**
- **Does NOT ask for tax increase or bond measure**



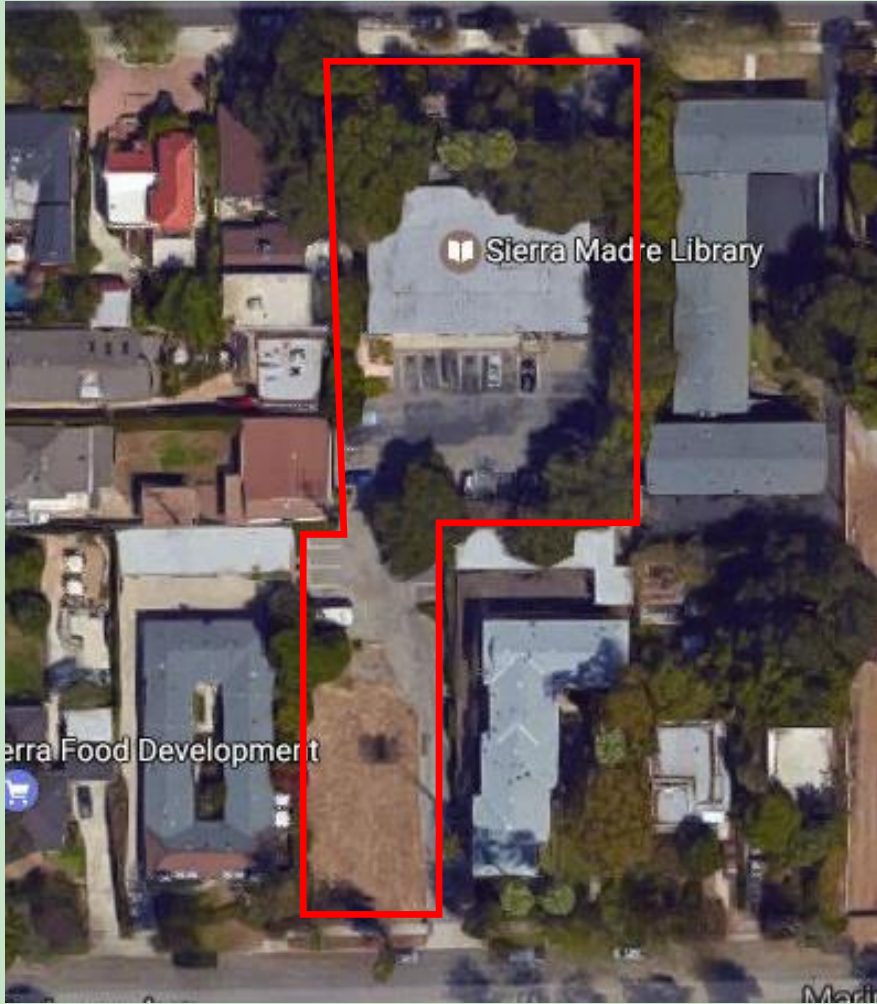
- Set in City's largest park
- 16,000 to 18,000 sq ft
- 3,600 sq ft of open flexible space, classrooms and meeting rooms
- ADA accessible











Cost = \$3M

Addition scalable to funds in hand

Funding

\$2M to \$2.6M sale of current library property

\$250,000 Estate donations

\$60,000 Gift and Memorial donations

Financial support of the Friends of the Library

Fundraising effort for furniture/shelving

NO parcel tax or bond measure



Expansion and move: Estimated Spring of 2019

Next Steps

Official assessment of property
Architectural plans



What we could offer:

Dedicated Teen area

Technology space

Youth programming and afterschool programming

Adult educational and recreational classes and workshops

Contract instruction classes

Coordination of classes with Senior Center

Meeting rooms

Rental space on second floor

YMCA partnership to provide summer camps, extended growth classes, daycare

More space for community to meet, study, work, learn, and grow



Questions?

